

**ATTACHMENT 2
IMAGES TAKEN BY PETER LOVELL ON 24 JULY 2014**

1. [Illegible text]

2. [Illegible text]

3. [Illegible text]

4. [Illegible text]

5. [Illegible text]

6. [Illegible text]

7. [Illegible text]

8. [Illegible text]

9. [Illegible text]

10. [Illegible text]

11. [Illegible text]

12. [Illegible text]

13. [Illegible text]

14. [Illegible text]

15. [Illegible text]



Figure 1 The Ann Street elevation of the Oriental Hotel



Figure 2 The Ann Street and Nelson Place elevations of the Oriental Hotel



Figure 3 View of the hotel from Nelson Place



Figure 4 Detail of an upper level window



Figure 5 The single storey wing to Ann Street. The physical evidence indicates that the roof framing is of recent origins and that the Ann Street wall is constructed of modern brickwork.



Figure 6 Detail of the Ann Street wall in the single storey wing



Figure 7 The roof framing to the Ann Street wing



Figure 8 The walls are typically of solid brickwork. A single brick measured at 8" x 3 5/8th" x 2 1/2 inches. A diamond frog occurs in some bricks. The bricks are as would be expected for the date of construction.



Figure 9 The partially collapsed ceiling and floor structure in the Nelson Place corner bar.



Figure 10 The partially collapsed ceiling and floor structure in the Nelson Place corner bar.



Figure 11 The central stair at ground level with missing balustrade.

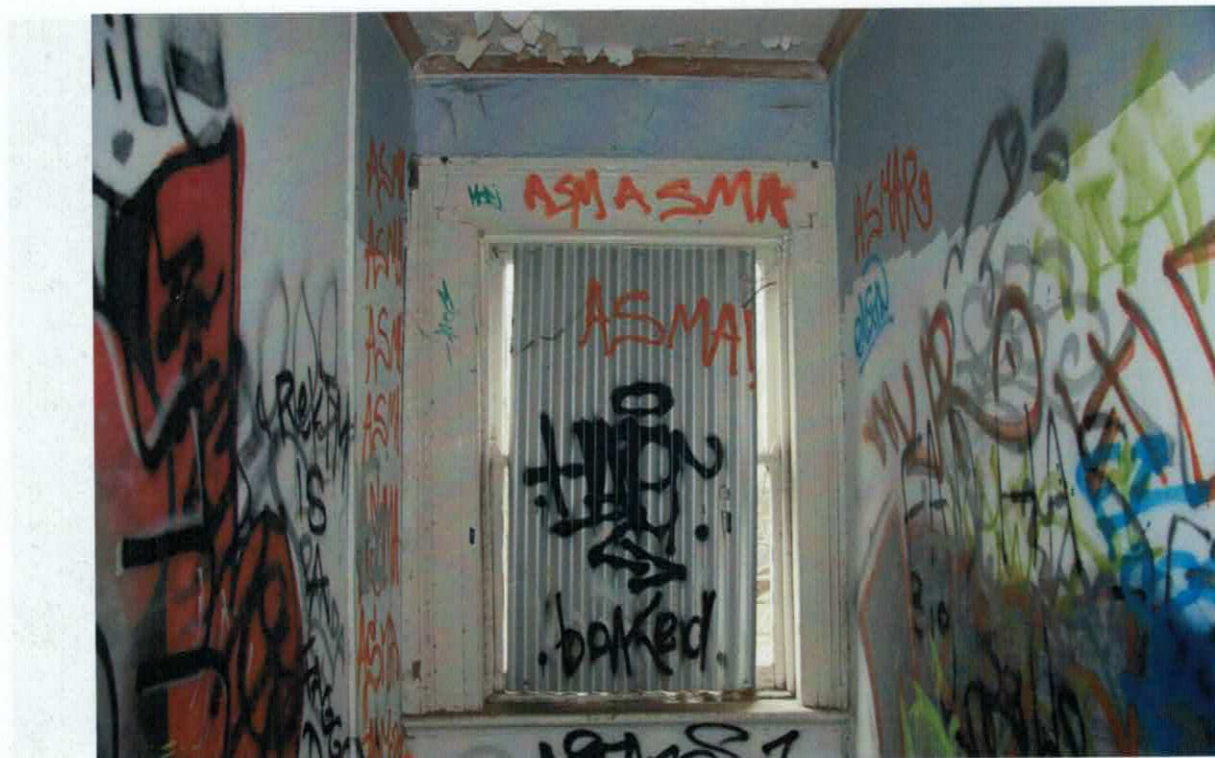


Figure 12 The first floor corridor window.



Figure 13 The main 'sitting room' on the first floor. Both the ceiling and floor are in a state of collapse.



Figure 14 The architrave detail on the first floor



Figure 15 Detail of later timber framed partition wall on the second floor.



Figure 16 The typical architrave detail to doors and windows. Note the bulging bricks caused by wall movement.



Figure 17 The stair between the first and second floors



Figure 18 Split hardwood laths used in a ceiling. These are typical for the date of construction.



Figure 19 The second floor corner room



Figure 20 A single bedroom on the second floor showing the one surviving 6 pane window sash



Figure 21 The underside of the roof framing showing the structure supporting the earlier flat roof.



Figure 22 A typical floor showing varying board widths. The boards are tongue and groove jointed.



Figure 23 Door wall detail on the second floor.